

SCI enables HSE to improve workflow and dissemination



PROMIS (Project Records Online Management Information System) is the latest addition to the family of information systems provided by SCI's ICT Division to the Health & Safety Executive (HSE). A web-based knowledge management information system, it will handle > £35m worth of science projects per year for HSE and facilitate coordination of all HSE's projects.

Promis manages information about HSE projects under development and then ensures timely evaluation and monitoring of the outputs, collecting, accommodating and reconciling the workflow of information from various stakeholders. Replacing existing paper-based systems with its electronic solution, PROMIS will allow users to complete and submit forms online while benefiting from assistance throughout the process: wizards, prompts, help screens and checkers.

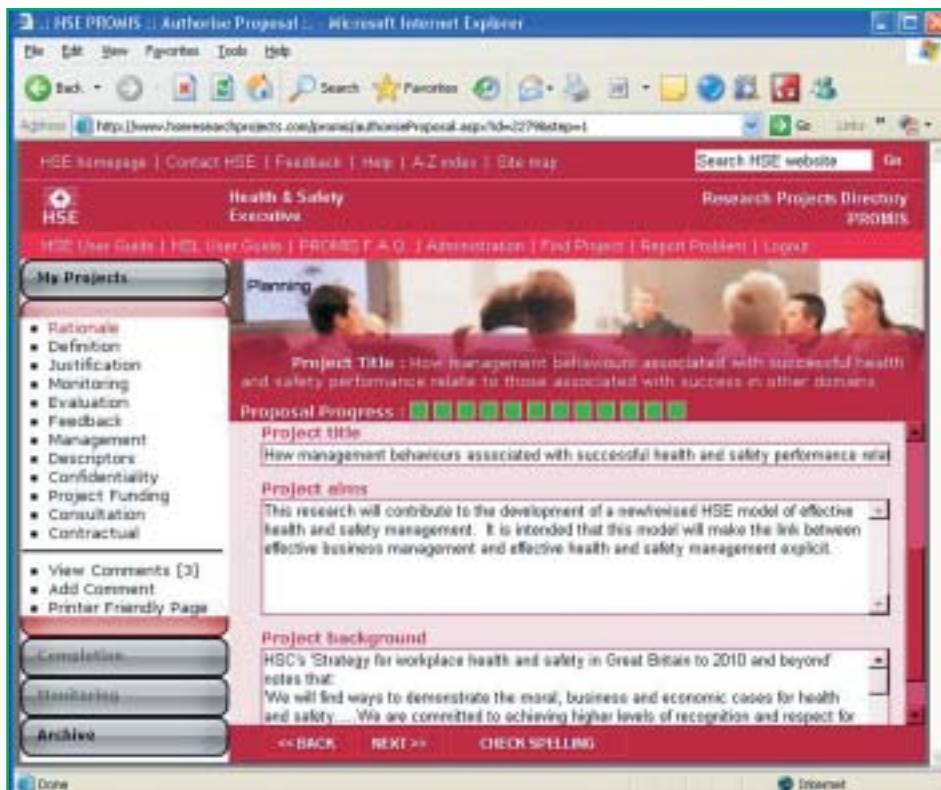
This solution reduces the effort encountered when running research contracts, cuts down on data entry errors and makes it easier for HSE to analyse management information.

SCI's approach was to examine and model the business processes of HSE and HSL and map the information requirements associated

with their workflows to a new system. This has made HSE's commissioning of projects more methodical, rigorous and easier to control.

Promis extends the Research Projects Directory (RPD) (<http://www.hseresearchprojects.com/>). SCI also created 'Science & Research Focus' (SRO) (<http://www.hsesro.com/>) see *IRF* Issue 65. RPD and SRO are public facing systems delivering the HSE's research output to the public. PROMIS, by contrast, is an 'extranet-style' system aimed at better access and dissemination amongst HSE, the Health & Safety Laboratory and local authorities when developing that output.

For further information please contact Andrew Crowley, Technical Specialist, SCI (10344 623345; E-mail: a.crowley@steel-sci.com).



Typical screen of the project details held within PROMIS